



# PROVIDER DIRECTORY & Services Guide

November 2024



## MISSION

To consistently deliver exceptional health care by demonstrating the values of service, teamwork, accountability, respect and safe care.

## VISION

To be the best community healthcare system in the nation, with service as our guiding principle.



Hugh Chatham Health has a reputation for excellence, and our achievements over the past year have raised the bar even higher. I am proud to work with the professionals, staff and volunteers whose combined talent creates such a special experience for our patients. Thanks to them, Hugh Chatham is a leader in patient safety, receiving the Women's Choice Award as one of America's Best Hospitals for Patient Safety and Stroke Care. We are also one of two hospitals in North Carolina to receive the Joint Commission's Gold Seal of Approval® for the Advanced Certification for Total Hip and Total Knee Replacement.

In the following pages, you will be introduced to some of the best providers available. These skilled and compassionate professionals provide excellent, personalized care to the region and beyond. Our commitment is to provide specialty care closer to home, including services dedicated to your good health.

Last, and certainly not least, community support will remain vital as we endeavor to serve you and your loved ones. Whether through volunteering, philanthropy, or by ensuring we understand your needs, you are an important part of the Hugh Chatham healthcare family, and together we are making OUR communities a better place to live.

Sincerely,

A handwritten signature in black ink, appearing to read 'Paul Hammes', with a long horizontal flourish extending to the right.

Paul Hammes, FACHE  
Chief Executive Officer

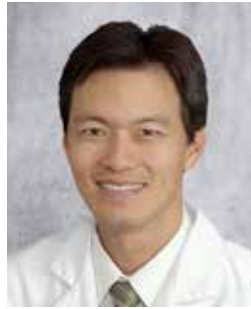
## COUNSELING



**Stephanie Allen**  
LCSW

Mental Health Counseling  
600 Chatham Medical Park  
Elkin, NC  
336-835-4819

## DERMATOLOGY



**Andrew D. Lee**  
MD

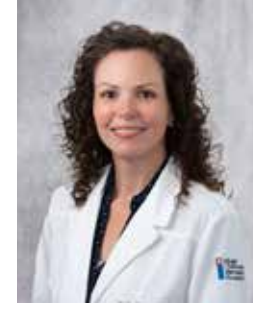
Dermatology  
201-A Eldon Parks Drive  
Elkin, NC  
336-835-0165



**Amber Keller**  
PA-C

Dermatology  
201-A Eldon Parks Drive  
Elkin, NC  
336-835-0165

## ENDOCRINOLOGY



**Jennifer Marion**  
ANP-BC

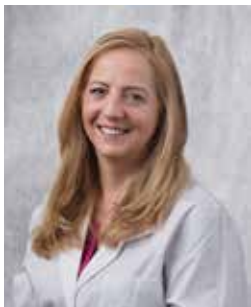
Multispecialty  
123 Scenic Outlet Lane, Suite 3  
Mt. Airy, NC  
336-352-4500



**James O'Hare**  
MD

Internal Medicine & Transitional Care  
300 Johnson Ridge Medical Park  
Elkin, NC  
336-258-8100

## FAMILY MEDICINE



**Marion Alexander**  
FNP-C

Family Medicine  
600 Chatham Medical Park  
Elkin, NC  
336-835-4819



**Meg Arboleda**  
MD

Family Medicine & Obstetrics  
680 Parkwood Medical Park  
Elkin, NC  
336-527-8359



**Tara Ardito**  
PA-C

Family Medicine  
911 East Atkins Street  
Dobson, NC  
336-374-1113



**Mary-Emma Beres**  
MD

Family Medicine  
600 Chatham Medical Park  
Elkin, NC  
336-835-4819



**Candi Branch**  
FNP-C

Family Medicine & Express Care  
3369 Clingman Road  
Ronda, NC  
336-984-3003



**Emily Childers**  
PA-C

Family Medicine  
5229 Rock Creed Road  
Hays, NC  
336-696-2711

## FAMILY MEDICINE (CONTINUED)



**Jennifer Childress**

FNP-BC

Family Medicine  
5229 Rock Creed Road  
Hays, NC  
336-696-2711



**Charity Cranford**

FNP-C

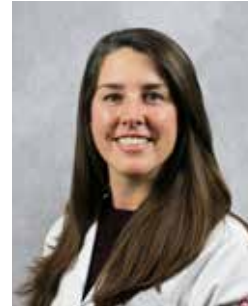
Family Medicine  
600 Chatham Medical Park  
Elkin, NC  
336-835-4819



**Samantha Garriss**

FNP-C

Family Medicine  
600 Chatham Medical Park  
Elkin, NC  
336-835-4819



**Brianna Hitchner**

DO

Family Medicine & Obstetrics  
680 Parkwood Medical Park  
Elkin, NC  
336-527-8359



**Laura Hubbard**

MD

Family Medicine  
5229 Rock Creed Road  
Hays, NC  
336-696-2711



**Rachel Jones**

FNP-BC

Hugh Chatham Medical Group  
336-527-6000



**Jessica Mabe**

FNP-BC

Family Medicine/Urgent Care  
5229 Rock Creed Road  
Hays, NC  
336-696-2711



**Mark Mayes**

FNP-BC

Family Medicine/Urgent Care  
911 East Atkins Street  
Dobson, NC  
336-374-1113



**Shonda Smitherman**

FNP-C

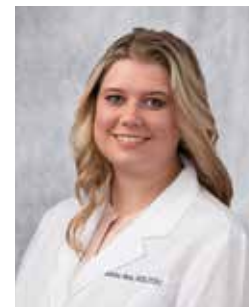
Family Medicine  
911 East Atkins Street  
Dobson, NC  
336-374-1113



**Nicholas Vernon**

DO

Family Medicine & Express Care  
3369 Clingman Road  
Ronda, NC  
336-984-3003



**Kendra Watts**

FNP-C

Family Medicine & Express Care  
3369 Clingman Road  
Ronda, NC  
336-984-3003

## GASTROENTEROLOGY



**Joe Argenta**

PA-C

Gastroenterology  
201 West Main Street  
Elkin, NC  
336-526-6195



**Sarba Kundu**

MD

Gastroenterology  
201 West Main Street  
Elkin, NC  
336-526-6195

## GENERAL SURGERY



**Robert G. Peterson**

MD

General Surgery  
101-A Eldon Parks Drive  
Elkin, NC  
336-835-2349



**Christopher Smith**

DO

General Surgery  
101-A Eldon Parks Drive  
Elkin, NC  
336-835-2349

## HOSPITALISTS



**Drew Bostick**

DO

Medical Center  
180 Parkwood Dr  
Elkin, NC  
336-527-7280



**Mohammad Garba**

MD

Medical Center  
180 Parkwood Dr  
Elkin, NC  
336-527-7280



**Abel Gimisso**

MD

Medical Center  
180 Parkwood Dr  
Elkin, NC  
336-527-7280



**Vijay Jarsania**

MD

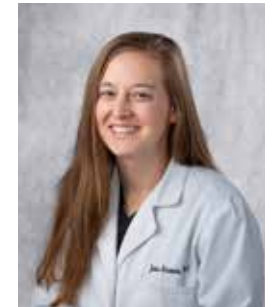
Medical Center  
180 Parkwood Dr  
Elkin, NC  
336-527-7280



**Sheri Komdeur**

ANP-C

Medical Center  
180 Parkwood Dr  
Elkin, NC  
336-527-7280



**Joanie Macemore**

PA-C

Medical Center  
180 Parkwood Dr  
Elkin, NC  
336-527-7280

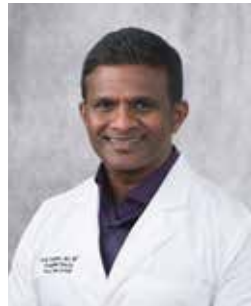
## HOSPITALISTS (CONTINUED)



**Jacob Nadakav**

MD

Medical Center  
180 Parkwood Dr  
Elkin, NC  
336-527-7280



**Murug Subbiah**

MD

Medical Center  
180 Parkwood Dr  
Elkin, NC  
336-527-7280



**Julie Taylor**

MD, FACP

Medical Center  
180 Parkwood Dr  
Elkin, NC  
336-527-7280



**Stephen Tobin**

MD

Medical Center  
180 Parkwood Dr  
Elkin, NC  
336-527-7280

## INTERNAL MEDICINE



**Alan Casciola**

DO

Internal Medicine & Transitional Care  
300 Johnson Ridge Medical Park  
Elkin, NC  
336-258-8094



**Jacqueline Darcey**

MD

Internal Medicine & Transitional Care  
300 Johnson Ridge Medical Park  
Elkin, NC  
336-258-8094



**Paul Garrison, Jr.**

MD

Internal Medicine  
500 Chatham Medical Park  
Elkin, NC  
336-835-3136



**Paul Gulley**

MD

Internal Medicine  
500 Chatham Medical Park  
Elkin, NC  
336-835-3136



**Andras Neumark**

MD

Internal Medicine  
500 Chatham Medical Park  
Elkin, NC  
336-835-3136

## NEUROLOGY



**Sarah Day**  
FNP-C

Neurology  
101-B Eldon Parks Drive  
Elkin, NC  
336-526-0188



**Bobbi Hurst**  
PA-C

Neurology  
101-B Eldon Parks Drive  
Elkin, NC  
336-526-0188



**Steven Meadows**  
MD

Neurology  
101-B Eldon Parks Drive  
Elkin, NC  
336-526-0188

## NEWBORN NURSERY



**Meg Arboleda**  
MD

Family Medicine & Obstetrics  
680 Parkwood Medical Park  
Elkin, NC  
336-527-8359



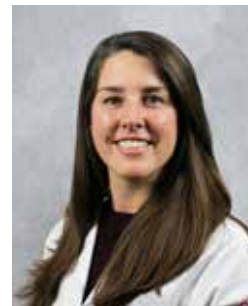
**Trisha Boyd**  
NNP-BC

Medical Center  
180 Parkwood Drive  
Elkin, NC  
336-527-7374



**Erma Cooke**  
NNP-BC

Medical Center  
180 Parkwood Drive  
Elkin, NC  
336-527-7374



**Brianna Hitchner**  
DO

Family Medicine & Obstetrics  
680 Parkwood Medical Park  
Elkin, NC  
336-527-8359



## OB/GYN



**Meg Arboleda**  
MD

Family Medicine & Obstetrics  
680 Parkwood Medical Park  
Elkin, NC  
336-527-8359



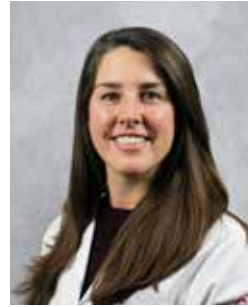
**Beverly Byrd**  
MD

Women's Center  
150 Parkwood Drive  
Elkin, NC  
336-835-5945



**Jamette Garrett**  
DO

Women's Center  
150 Parkwood Drive  
Elkin, NC  
336-835-5945



**Brianna Hitchner**  
DO

Family Medicine & Obstetrics  
680 Parkwood Medical Park  
Elkin, NC  
336-527-8359



**Shannon Huff**  
MD

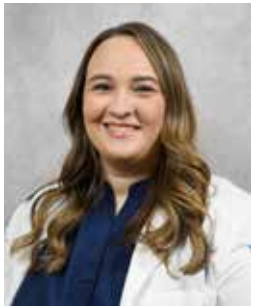
Women's Center  
150 Parkwood Drive  
Elkin, NC  
336-835-5945



**Megan Jaynes**  
CNM

Women's Center  
150 Parkwood Drive  
Elkin, NC  
336-835-5945

## OB/GYN (CONTINUED)



**Adrian Ramey**  
CNM

Women's Center  
150 Parkwood Drive  
Elkin, NC  
336-835-5945



**Kacy Stille**  
MD

Women's Center  
150 Parkwood Drive  
Elkin, NC  
336-835-5945



**Teresa Tharpe**  
GONP

Women's Center  
150 Parkwood Drive  
Elkin, NC  
336-835-5945

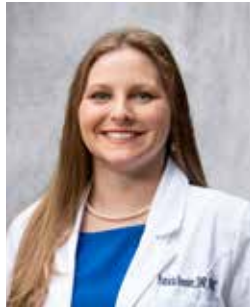
## ORTHOPEDICS



**Michael Beres**

FNP-C

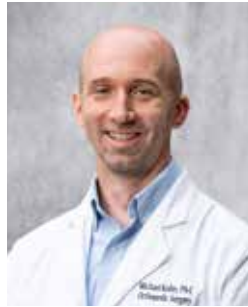
Orthopedics  
400 Johnson Ridge Medical Park  
Elkin, NC  
336-526-4500



**Patricia Hoosier**

DNP, FNP-C

Orthopedics  
400 Johnson Ridge Medical Park  
Elkin, NC  
336-526-4500



**Michael Keller**

PA-C

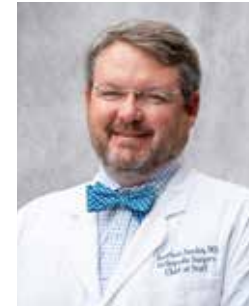
Orthopedics  
400 Johnson Ridge Medical Park  
Elkin, NC  
336-526-4500



**Michael McGowan**

DPM

Podiatry  
150 Chatham Medical Park,  
Elkin, NC  
336-835-7676



**Jonathan Snyder**

MD

Orthopedics  
400 Johnson Ridge Medical Park  
Elkin, NC  
336-526-4500



**Marc Stevens**

MD

Orthopedics  
400 Johnson Ridge Medical Park  
Elkin, NC  
336-526-4500

## ORTHOPEDICS (CONTINUED)

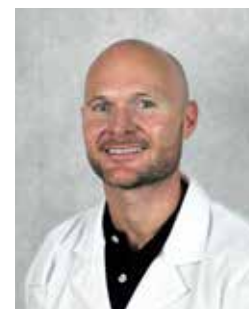


**Jack Whitaker**

DO

Orthopedics  
400 Johnson Ridge Medical Park  
Elkin, NC  
336-526-4500

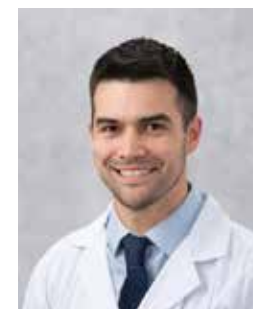
## PODIATRY



**Matthew Fernandez**

DPM

Podiatry  
150 Chatham Medical Park,  
Elkin, NC  
336-835-7676



**Michael McGowan**

DPM

Podiatry  
150 Chatham Medical Park,  
Elkin, NC  
336-835-7676

## PSYCHIATRY & BEHAVIORAL HEALTH



**Lee Bourgeois**  
MD, FAPA

Psychiatry & Behavioral Health  
690 Parkwood Medical Park  
Elkin, NC  
336-526-2619



**Crystal Luffman**  
PMHNP

Psychiatry & Behavioral Health  
690 Parkwood Medical Park  
Elkin, NC  
336-526-2619



**JeRay Johnson**  
MD

Pulmonology  
546 Winston Road  
Jonesville, NC  
336-527-7298

## URGENT/EXPRESS CARE



**Hannah Beasley**  
PA-C

Express Care  
911 East Atkins Street  
Dobson, NC  
336-374-1010



**Candi Branch**  
FNP-C

Family Medicine & Express Care  
3369 Clingman Road  
Ronda, NC  
336-984-3003



**Candace Burcham**  
FNP-C

Express Care  
911 East Atkins Street  
Dobson, NC  
336-374-1010



**Mary Hedrick**  
FNP-C

Urgent Care  
546 Winston Road  
Jonesville, NC  
336-526-0037



**Monica Keener**  
FNP-BC

Hugh Chatham Medical Group  
336-527-6000



**Jennifer King**  
FNP-C

Urgent Care  
631 CC Camp Road  
Elkin, NC  
336-366-1072

## URGENT/EXPRESS CARE (CONTINUED)



**Jessica Mabe**  
FNP-BC

Family Medicine/Urgent Care  
5229 Rock Creed Road  
Hays, NC  
336-696-2711



**Ashley Marion**  
PA-C

Express Care  
911 East Atkins Street  
Dobson, NC  
336-374-1010



**Mark Mayes**  
FNP-BC

Family Medicine/Express Care  
911 East Atkins Street  
Dobson, NC  
336-374-1113



**Kim Parrett**  
PA-C

Urgent Care  
631 CC Camp Road  
Elkin, NC  
336-366-1072



**Todd St. John**  
FNP-C

Urgent Care  
546 Winston Road  
Jonesville, NC  
336-526-0037



**Sarah Vences**  
FNP-C

Urgent Care  
546 Winston Road  
Jonesville, NC  
336-526-0037

## URGENT/EXPRESS CARE (CONTINUED)



**Kendra Watts**  
FNP-C

Family Medicine & Express Care  
3369 Clingman Road  
Ronda, NC  
336-984-3003



**Nicholas Vernon**  
DO

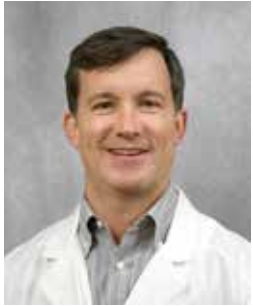
Family Medicine & Express Care  
3369 Clingman Road  
Ronda, NC  
336-984-3003



**Karmon West**  
PA-C

Urgent Care  
546 Winston Road  
Jonesville, NC  
336-526-0037

## UROLOGY



**J. Daniell Rackley**  
MD  
Urology  
200 Johnson Ridge Medical Park  
Elkin, NC  
336-526-0040



**Bree Fleck**  
FNP-C  
Urology  
200 Johnson Ridge Medical Park  
Elkin, NC  
336-526-0040

## WOUND CARE



**Matthew Fernandez**  
DPM  
Podiatry  
150 Chatham Medical Park  
Elkin, NC  
336-835-7676



**Christopher Smith**  
DO  
General Surgery  
101-A Eldon Parks Drive  
Elkin, NC  
336-835-2349

# Service Directory

## CANCER SERVICES

Hugh Chatham Health | Cancer Center ..... 180 Parkwood Drive, Elkin, NC ..... 336-527-7577  
Breast Care Services ..... 180 Parkwood Drive, Elkin, NC ..... 336-527-7477

## CARDIAC REHAB

Cardiac Rehab..... 180 Parkwood Drive, Elkin, NC ..... 336-527-7523

## DERMATOLOGY

Hugh Chatham Health | Dermatology ..... 201-A Eldon Parks Drive, Elkin, NC ..... 336-835-0165

## EMERGENCY MEDICINE

Hugh Chatham Health | Medical Center ..... 180 Parkwood Drive, Elkin, NC ..... 336-527-7217

## ENDOCRINOLOGY

Hugh Chatham Health | Endocrinology..... 300 Johnson Ridge Medical Park, Elkin, NC ..... 336-258-8100  
Hugh Chatham Health | Multispecialty ..... 123 Scenic Outlet Lane, Suite 3, Mount Airy, NC ..... 336-352-4500

## GASTROENTEROLOGY

Hugh Chatham Health | Gastroenterology..... 201 West Main Street, Elkin, NC ..... 336-526-6195

## GERIATRICS

Hugh Chatham Health | Internal Medicine..... 500 Chatham Medical Park, Elkin, NC ..... 336-835-3136

## HOME HEALTH (SKILLED NURSING, PHYSICAL THERAPY, OCCUPATIONAL THERAPY, SPEECH THERAPY, MEDICAL SOCIAL WORK)

Hugh Chatham Health at Home  
North Carolina..... 560 Winston Road, Jonesville, NC..... 336-526-6460

## IMAGING (X-Ray, CT, Ultrasound, Mammography)

Hugh Chatham Health | Medical Center ..... 180 Parkwood Drive, Elkin, NC ..... 336-527-7477

## INDEPENDENT LIVING

Parkwood Place Independent Living ..... 601 Johnson Ridge Road, Elkin, NC ..... 336-526-6000

## INFUSIONS

Hugh Chatham Health | Ambulatory Specialty Department ..... 180 Parkwood Drive, Elkin, NC ..... 336-527-7184

## INTERNAL MEDICINE

Hugh Chatham Health | Internal Medicine..... 500 Chatham Medical Park, Elkin, NC ..... 336-835-3136  
Hugh Chatham Health | Internal Medicine & Transitional Care..... 300 Johnson Ridge Medical Park, Elkin, NC ..... 336-258-8094

# Service Directory

## LABORATORY SERVICES

Hugh Chatham Health | Medical Center ..... 180 Parkwood Drive, Elkin, NC ..... 336-527-7315

## LYMPHEDEMA

Hugh Chatham Health | Multispecialty ..... 123 Scenic Outlet Lane, Suite 3, Mount Airy, NC ..... 336-352-4500

## NEUROLOGY

Hugh Chatham Health | Neurology ..... 101-B Eldon Parks Drive, Elkin, NC ..... 336-526-0188

## NUTRITION

Hugh Chatham Health | Medical Center ..... 180 Parkwood Drive, Elkin, NC ..... 336-527-7591

## OBSTETRICS/GYNECOLOGY

Hugh Chatham Health | Family Medicine & Obstetrics ..... 680 Parkwood Medical Park, Elkin, NC ..... 336-527-8359

Hugh Chatham Health | Women's Center ..... 150 Parkwood Drive, Elkin, NC ..... 336-835-5945

## ORTHOPEDECS/SPORTS MEDICINE

Hugh Chatham Health | Orthopedics

Elkin ..... 400 Johnson Ridge Medical Park, Elkin, NC ..... 336-526-4500

Jonesville..... 546 Winston Road, Jonesville, NC..... 336-789-9041

## OUTPATIENT THERAPY (PHYSICAL, OCCUPATIONAL, SPEECH, LYMPHEDEMA)

Hugh Chatham Health | Outpatient Therapy ..... 400 Johnson Ridge Medical Park, Elkin, NC ..... 336-835-0303

Hugh Chatham Health | Multispecialty ..... 123 Scenic Outlet Lane, Suite 3, Mount Airy, NC ..... 336-352-4500

## PRIMARY CARE/FAMILY MEDICINE

Hugh Chatham Health | Family Medicine

Dobson..... 911 East Atkins Street, Dobson, NC ..... 336-374-1113

Elkin ..... 600 Chatham Medical Park, Elkin, NC ..... 336-835-4819

Hays..... 5229 Rock Creek Road, Hays, NC..... 336-696-2711

Jonesville..... 546 Winston Road, Jonesville, NC..... 336-526-2377

Hugh Chatham Health | Family Medicine & Obstetrics ..... 680 Parkwood Medical Park, Elkin, NC..... 336-527-8359

Hugh Chatham Health | Family Medicine & Express Care ..... 3369 Clingman Road, Ronda, NC..... 336-984-3003

## PHARMACY

Hugh Chatham Health | Medical Center ..... 180 Parkwood Drive, Elkin, NC..... 336-527-7220

# Service Directory

## PODIATRY

Hugh Chatham Health | Podiatry

Elkin..... 150 Chatham Medical Park, Elkin, NC ..... 336-835-7676

## PSYCHIATRY & BEHAVIORAL HEALTH

Hugh Chatham Health | Psychiatry & Behavioral Health ..... 690 Parkwood Medical Park, Elkin, NC..... 336-526-2619

## PULMONARY/CRITICAL CARE

Hugh Chatham Health | Pulmonology..... 546 Winston Road, Jonesville, NC..... 336-527-7298

Pulmonary Rehab ..... 180 Parkwood Drive, Elkin, NC ..... 336-527-7523

## SURGICAL SERVICES

Hugh Chatham Health | General Surgery

Elkin ..... 101-A Eldon Parks Drive, Elkin, NC ..... 336-835-2349

## URGENT/EXPRESS CARE

Hugh Chatham Health | Urgent Care (Elkin)..... 631 CC Camp Road, Elkin, NC ..... 336-366-1072

Hugh Chatham Health | Urgent Care (Jonesville) ..... 546 Winston Road, Jonesville, NC..... 336-526-0037

Hugh Chatham Health | Family Medicine & Express Care (Clingman) ..... 3369 Clingman Road, Ronda, NC..... 336-984-3003

Hugh Chatham Health | Family Medicine & Express Care (Dobson)..... 911 E. Atkins Street, Dobson, NC..... 336-374-1010

## UROLOGY

Hugh Chatham Health | Urology..... 200 Johnson Ridge Medical Park, Elkin, NC ..... 336-526-0040

## WOUND CARE

Hugh Chatham Health | Wound Care ..... 180 Parkwood Drive, Elkin, NC ..... 336-527-7184

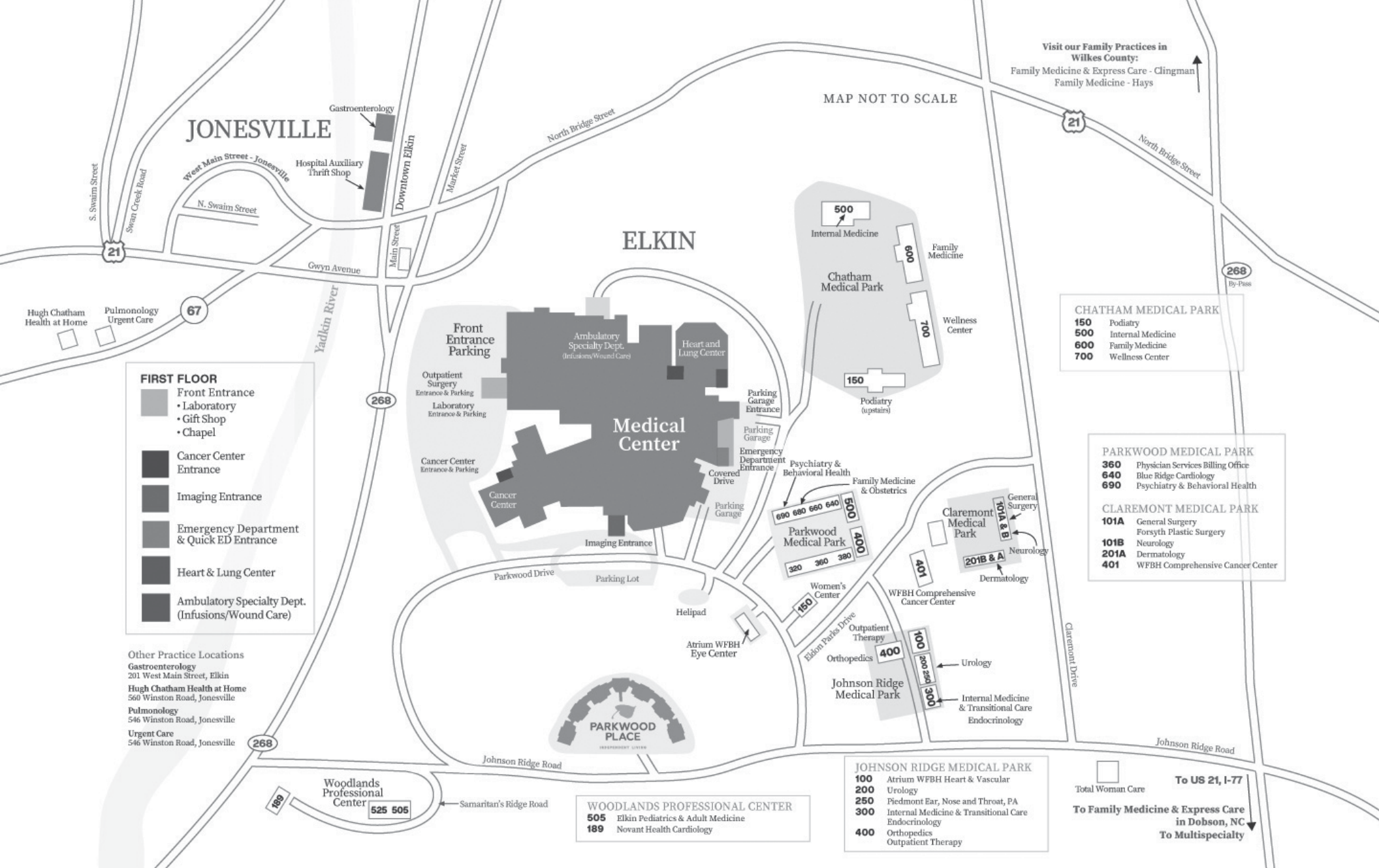
## FIND A PROVIDER

Visit [www.hughchatham.org/find-a-provider](http://www.hughchatham.org/find-a-provider) to search by name or specialty.

## MAKE AN APPOINTMENT

Visit [www.hughchatham.org/appointments](http://www.hughchatham.org/appointments) to select diagnosis or practice location.





**24 SPECIALTIES. 900+ HEALTHCARE PROFESSIONALS.**  
**350,000+ COMPASSIONATE MOMENTS CREATED ANNUALLY.**







180 Parkwood Drive, Elkin, NC 28621

**(336) 527-7000**

[www.hughchatham.org](http://www.hughchatham.org)