



PROVIDER DIRECTORY & Services Guide

February 2025

MISSION

To consistently deliver exceptional health care by demonstrating the values of service, teamwork, accountability, respect and safe care.

VISION

To be the best community healthcare system in the nation, with service as our guiding principle.



Hugh Chatham Health has a reputation for excellence, and our achievements over the past year have raised the bar even higher. I am proud to work with the professionals, staff and volunteers whose combined talent creates such a special experience for our patients. Thanks to them, Hugh Chatham is a leader in patient safety, receiving the Women's Choice Award as one of America's Best Hospitals for Patient Safety and Stroke Care. We are also one of four hospitals in North Carolina to receive the Joint Commission's Gold Seal of Approval® for the Advanced Certification for Total Hip and Total Knee Replacement.

In the following pages, you will be introduced to some of the best providers available. These skilled and compassionate professionals provide excellent, personalized care to the region and beyond. Our commitment is to provide specialty care closer to home, including services dedicated to your good health.

Last, and certainly not least, community support will remain vital as we endeavor to serve you and your loved ones. Whether through volunteering, philanthropy, or by ensuring we understand your needs, you are an important part of the Hugh Chatham healthcare family, and together we are making OUR communities a better place to live.

Sincerely,

A handwritten signature in black ink, appearing to read "Paul Hammes". The signature is fluid and cursive, with a long horizontal line extending to the right.

Paul Hammes, FACHE
Chief Executive Officer

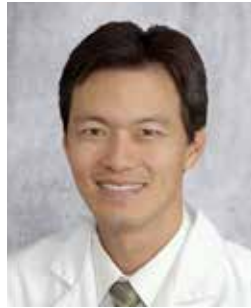
COUNSELING



Stephanie Allen
LCSW

Mental Health Counseling
600 Chatham Medical Park
Elkin, NC
336-835-4819

DERMATOLOGY



Andrew D. Lee
MD

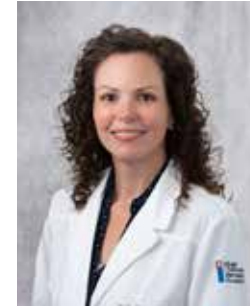
Dermatology
201-A Eldon Parks Drive
Elkin, NC
336-835-0165



Amber Keller
PA-C

Dermatology
201-A Eldon Parks Drive
Elkin, NC
336-835-0165

ENDOCRINOLOGY



Jennifer Marion
ANP-BC

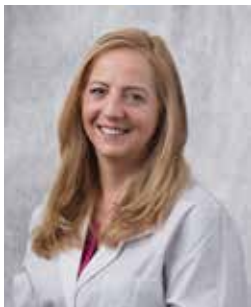
Endocrinology
Elkin, NC
336-258-8100



James O'Hare
MD

Internal Medicine & Transitional Care
300 Johnson Ridge Medical Park
Elkin, NC
336-258-8100

FAMILY MEDICINE



Marion Alexander
FNP-C

Family Medicine
600 Chatham Medical Park
Elkin, NC
336-835-4819



Meg Arboleda
MD

Family Medicine & Obstetrics
680 Parkwood Medical Park
Elkin, NC
336-527-8359



Tara Ardito
PA-C

Family Medicine
911 East Atkins Street
Dobson, NC
336-374-1113



Mary-Emma Beres
MD

Family Medicine
600 Chatham Medical Park
Elkin, NC
336-835-4819



Candi Branch
FNP-C

Family Medicine & Express Care
3369 Clingman Road
Ronda, NC
336-984-3003



Emily Childers
PA-C

Family Medicine
5229 Rock Creed Road
Hays, NC
336-696-2711

FAMILY MEDICINE (CONTINUED)



Jennifer Childress

FNP-BC

Family Medicine
5229 Rock Creed Road
Hays, NC
336-696-2711



Charity Cranford

FNP-C

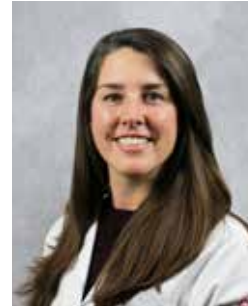
Family Medicine
600 Chatham Medical Park
Elkin, NC
336-835-4819



Samantha Garriss

FNP-C

Family Medicine
600 Chatham Medical Park
Elkin, NC
336-835-4819



Brianna Hitchner

DO

Family Medicine & Obstetrics
680 Parkwood Medical Park
Elkin, NC
336-527-8359



Laura Hubbard

MD

Family Medicine
5229 Rock Creed Road
Hays, NC
336-696-2711



Rachel Jones

FNP-BC

Hugh Chatham Medical Group
336-527-6000



Jessica Mabe

FNP-BC

Family Medicine/Urgent Care
5229 Rock Creed Road
Hays, NC
336-696-2711



Mark Mayes

FNP-BC

Family Medicine/Urgent Care
911 East Atkins Street
Dobson, NC
336-374-1113



Shonda Smitherman

FNP-C

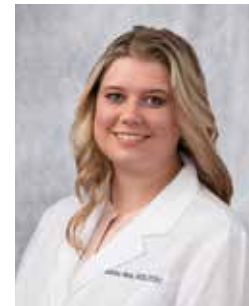
Family Medicine
911 East Atkins Street
Dobson, NC
336-374-1113



Nicholas Vernon

DO

Family Medicine & Express Care
3369 Clingman Road
Ronda, NC
336-984-3003



Kendra Watts

FNP-C

Family Medicine & Express Care
3369 Clingman Road
Ronda, NC
336-984-3003

GASTROENTEROLOGY



Joe Argenta

PA-C

Gastroenterology
201 West Main Street
Elkin, NC
336-526-6195



Sarba Kundu

MD

Gastroenterology
201 West Main Street
Elkin, NC
336-526-6195

GENERAL SURGERY



Robert G. Peterson

MD

General Surgery
101-A Eldon Parks Drive
Elkin, NC
336-835-2349



Christopher Smith

DO

General Surgery
101-A Eldon Parks Drive
Elkin, NC
336-835-2349

HOSPITALISTS



Drew Bostick

DO

Medical Center
180 Parkwood Dr
Elkin, NC
336-527-7280



Mohammad Garba

MD

Medical Center
180 Parkwood Dr
Elkin, NC
336-527-7280



Abel Gimisso

MD

Medical Center
180 Parkwood Dr
Elkin, NC
336-527-7280



Vijay Jarsania

MD

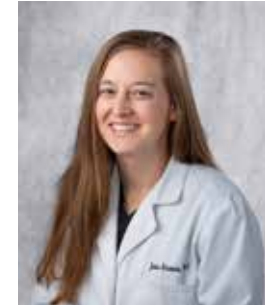
Medical Center
180 Parkwood Dr
Elkin, NC
336-527-7280



Sheri Komdeur

ANP-C

Medical Center
180 Parkwood Dr
Elkin, NC
336-527-7280



Joanie Macemore

PA-C

Medical Center
180 Parkwood Dr
Elkin, NC
336-527-7280

HOSPITALISTS (CONTINUED)



Jacob Nadakav

MD

Medical Center
180 Parkwood Dr
Elkin, NC
336-527-7280



Murug Subbiah

MD

Medical Center
180 Parkwood Dr
Elkin, NC
336-527-7280



Julie Taylor

MD, FACP

Medical Center
180 Parkwood Dr
Elkin, NC
336-527-7280



Stephen Tobin

MD

Medical Center
180 Parkwood Dr
Elkin, NC
336-527-7280

INTERNAL MEDICINE



Alan Casciola

DO

Internal Medicine & Transitional Care
300 Johnson Ridge Medical Park
Elkin, NC
336-258-8094



Jacqueline Darcey

MD

Internal Medicine & Transitional Care
300 Johnson Ridge Medical Park
Elkin, NC
336-258-8094



Paul Garrison, Jr.

MD

Internal Medicine
500 Chatham Medical Park
Elkin, NC
336-835-3136



Paul Gulley

MD

Internal Medicine
500 Chatham Medical Park
Elkin, NC
336-835-3136



Andras Neumark

MD

Internal Medicine
500 Chatham Medical Park
Elkin, NC
336-835-3136

NEUROLOGY



Sarah Day
FNP-C

Neurology
101-B Eldon Parks Drive
Elkin, NC
336-526-0188



Bobbi Hurst
PA-C

Neurology
101-B Eldon Parks Drive
Elkin, NC
336-526-0188



Steven Meadows
MD

Neurology
101-B Eldon Parks Drive
Elkin, NC
336-526-0188

NEWBORN NURSERY



Meg Arboleda
MD

Family Medicine & Obstetrics
680 Parkwood Medical Park
Elkin, NC
336-527-8359



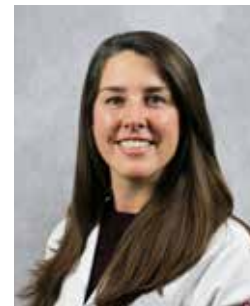
Trisha Boyd
NNP-BC

Medical Center
180 Parkwood Drive
Elkin, NC
336-527-7374



Erma Cooke
NNP-BC

Medical Center
180 Parkwood Drive
Elkin, NC
336-527-7374



Brianna Hitchner
DO

Family Medicine & Obstetrics
680 Parkwood Medical Park
Elkin, NC
336-527-8359

OB/GYN



Meg Arboleda
MD

Family Medicine & Obstetrics
680 Parkwood Medical Park
Elkin, NC
336-527-8359



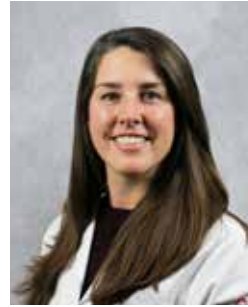
Beverly Byrd
MD

Women's Center
150 Parkwood Drive
Elkin, NC
336-835-5945



Jamette Garrett
DO

Women's Center
150 Parkwood Drive
Elkin, NC
336-835-5945



Brianna Hitchner
DO

Family Medicine & Obstetrics
680 Parkwood Medical Park
Elkin, NC
336-527-8359



Shannon Huff
MD

Women's Center
150 Parkwood Drive
Elkin, NC
336-835-5945



Megan Jaynes
CNM

Women's Center
150 Parkwood Drive
Elkin, NC
336-835-5945

OB/GYN (CONTINUED)



Adrian Ramey
CNM

Women's Center
150 Parkwood Drive
Elkin, NC
336-835-5945



Kacy Stille
MD

Women's Center
150 Parkwood Drive
Elkin, NC
336-835-5945



Teresa Tharpe
GONP

Women's Center
150 Parkwood Drive
Elkin, NC
336-835-5945

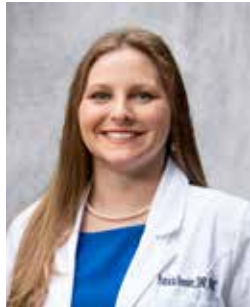
ORTHOPEDICS



Michael Beres

FNP-C

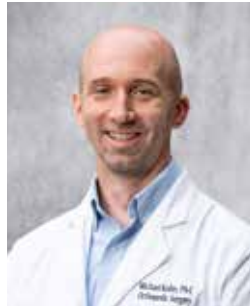
Orthopedics
400 Johnson Ridge Medical Park
Elkin, NC
336-526-4500



Patricia Hoosier

DNP, FNP-C

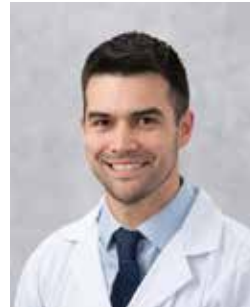
Orthopedics
400 Johnson Ridge Medical Park
Elkin, NC
336-526-4500



Michael Keller

PA-C

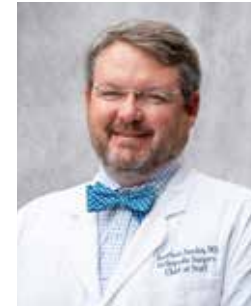
Orthopedics
400 Johnson Ridge Medical Park
Elkin, NC
336-526-4500



Michael McGowan

DPM

Podiatry
150 Chatham Medical Park,
Elkin, NC
336-835-7676



Jonathan Snyder

MD

Orthopedics
400 Johnson Ridge Medical Park
Elkin, NC
336-526-4500



Marc Stevens

MD

Orthopedics
400 Johnson Ridge Medical Park
Elkin, NC
336-526-4500

ORTHOPEDICS (CONTINUED)



Jack Whitaker

DO

Orthopedics
400 Johnson Ridge Medical Park
Elkin, NC
336-526-4500

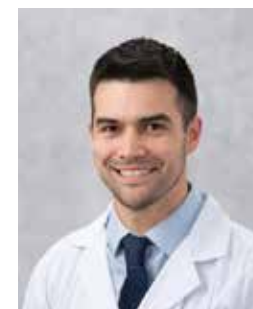
PODIATRY



Matthew Fernandez

DPM

Podiatry
800 Chatham Medical Park,
Elkin, NC
336-835-7676



Michael McGowan

DPM

Podiatry
800 Chatham Medical Park,
Elkin, NC
336-835-7676

PSYCHIATRY & BEHAVIORAL HEALTH



Lee Bourgeois
MD, FAPA

Psychiatry & Behavioral Health
690 Parkwood Medical Park
Elkin, NC
336-526-2619



Crystal Luffman
PMHNP

Psychiatry & Behavioral Health
690 Parkwood Medical Park
Elkin, NC
336-526-2619



JeRay Johnson
MD

Pulmonology
546 Winston Road
Jonesville, NC
336-527-7298

URGENT/EXPRESS CARE



Hannah Beasley
PA-C

Express Care
911 East Atkins Street
Dobson, NC
336-374-1010



Candi Branch
FNP-C

Family Medicine & Express Care
3369 Clingman Road
Ronda, NC
336-984-3003



Candace Burcham
FNP-C

Express Care
911 East Atkins Street
Dobson, NC
336-374-1010



Mary Hedrick
FNP-C

Urgent Care
546 Winston Road
Jonesville, NC
336-526-0037



Monica Keener
FNP-BC

Hugh Chatham Medical Group
336-527-6000



Jennifer King
FNP-C

Urgent Care
631 CC Camp Road
Elkin, NC
336-366-1072

URGENT/EXPRESS CARE (CONTINUED)



Jessica Mabe
FNP-BC

Family Medicine/Urgent Care
5229 Rock Creed Road
Hays, NC
336-696-2711



Ashley Marion
PA-C

Express Care
911 East Atkins Street
Dobson, NC
336-374-1010



Mark Mayes
FNP-BC

Family Medicine/Express Care
911 East Atkins Street
Dobson, NC
336-374-1113



Kim Parrett
PA-C

Urgent Care
631 CC Camp Road
Elkin, NC
336-366-1072



Todd St. John
FNP-C

Urgent Care
546 Winston Road
Jonesville, NC
336-526-0037



Sarah Vences
FNP-C

Urgent Care
546 Winston Road
Jonesville, NC
336-526-0037

URGENT/EXPRESS CARE (CONTINUED)



Kendra Watts
FNP-C

Family Medicine & Express Care
3369 Clingman Road
Ronda, NC
336-984-3003



Nicholas Vernon
DO

Family Medicine & Express Care
3369 Clingman Road
Ronda, NC
336-984-3003



Karmon West
PA-C

Urgent Care
546 Winston Road
Jonesville, NC
336-526-0037

UROLOGY



J. Daniell Rackley
MD
Urology
200 Johnson Ridge Medical Park
Elkin, NC
336-526-0040



Bree Fleck
FNP-C
Urology
200 Johnson Ridge Medical Park
Elkin, NC
336-526-0040

WOUND CARE



Matthew Fernandez
DPM
Podiatry
800 Chatham Medical Park
Elkin, NC
336-835-7676



Christopher Smith
DO
General Surgery
101-A Eldon Parks Drive
Elkin, NC
336-835-2349

Service Directory

CANCER SERVICES

Hugh Chatham Health | Cancer Center 180 Parkwood Drive, Elkin, NC 336-527-7577
Breast Care Services 180 Parkwood Drive, Elkin, NC 336-527-7477

CARDIAC REHAB

Cardiac Rehab..... 180 Parkwood Drive, Elkin, NC 336-527-7523

DERMATOLOGY

Hugh Chatham Health | Dermatology 201-A Eldon Parks Drive, Elkin, NC 336-835-0165

EMERGENCY MEDICINE

Hugh Chatham Health | Medical Center 180 Parkwood Drive, Elkin, NC 336-527-7217

ENDOCRINOLOGY

Hugh Chatham Health | Endocrinology..... 300 Johnson Ridge Medical Park, Elkin, NC 336-258-8100

GASTROENTEROLOGY

Hugh Chatham Health | Gastroenterology..... 201 West Main Street, Elkin, NC 336-526-6195

GERIATRICS

Hugh Chatham Health | Internal Medicine..... 500 Chatham Medical Park, Elkin, NC 336-835-3136

HOME HEALTH (SKILLED NURSING, PHYSICAL THERAPY, OCCUPATIONAL THERAPY, SPEECH THERAPY, MEDICAL SOCIAL WORK)

Hugh Chatham Health at Home
North Carolina..... 560 Winston Road, Jonesville, NC..... 336-526-6460

IMAGING (X-Ray, CT, Ultrasound, Mammography)

Hugh Chatham Health | Medical Center 180 Parkwood Drive, Elkin, NC 336-527-7477

INDEPENDENT LIVING

Parkwood Place Independent Living 601 Johnson Ridge Road, Elkin, NC 336-526-6000

INFUSIONS

Hugh Chatham Health | Ambulatory Specialty Department 180 Parkwood Drive, Elkin, NC 336-527-7184

INTERNAL MEDICINE

Hugh Chatham Health | Internal Medicine..... 500 Chatham Medical Park, Elkin, NC 336-835-3136
Hugh Chatham Health | Internal Medicine & Transitional Care..... 300 Johnson Ridge Medical Park, Elkin, NC 336-258-8094

Service Directory

LABORATORY SERVICES

Hugh Chatham Health | Medical Center 180 Parkwood Drive, Elkin, NC 336-527-7315

LYMPHEDEMA

Hugh Chatham Health | Outpatient Therapy 700 Chatham Medical Park, Elkin, NC 336-835-0303

NEUROLOGY

Hugh Chatham Health | Neurology 101-B Eldon Parks Drive, Elkin, NC 336-526-0188

NUTRITION

Hugh Chatham Health | Medical Center 180 Parkwood Drive, Elkin, NC 336-527-7591

OBSTETRICS/GYNECOLOGY

Hugh Chatham Health | Family Medicine & Obstetrics 680 Parkwood Medical Park, Elkin, NC 336-527-8359

Hugh Chatham Health | Women's Center 150 Parkwood Drive, Elkin, NC 336-835-5945

ORTHOPEDECS/SPORTS MEDICINE

Hugh Chatham Health | Orthopedics

Elkin 400 Johnson Ridge Medical Park, Elkin, NC 336-526-4500

Jonesville..... 546 Winston Road, Jonesville, NC..... 336-789-9041

OUTPATIENT THERAPY (PHYSICAL, OCCUPATIONAL, SPEECH, LYMPHEDEMA)

Hugh Chatham Health | Outpatient Therapy 700 Chatham Medical Park, Elkin, NC 336-835-0303

PRIMARY CARE/FAMILY MEDICINE

Hugh Chatham Health | Family Medicine

Dobson..... 911 East Atkins Street, Dobson, NC 336-374-1113

Elkin 600 Chatham Medical Park, Elkin, NC 336-835-4819

Hays..... 5229 Rock Creek Road, Hays, NC..... 336-696-2711

Hugh Chatham Health | Family Medicine & Obstetrics 680 Parkwood Medical Park, Elkin, NC..... 336-527-8359

Hugh Chatham Health | Family Medicine & Express Care 3369 Clingman Road, Ronda, NC..... 336-984-3003

PHARMACY

Hugh Chatham Health | Medical Center 180 Parkwood Drive, Elkin, NC..... 336-527-7220

PODIATRY

Hugh Chatham Health | Podiatry..... 800 Chatham Medical Park, Elkin, NC 336-835-7676

Service Directory

PSYCHIATRY & BEHAVIORAL HEALTH

Hugh Chatham Health | Psychiatry & Behavioral Health 690 Parkwood Medical Park, Elkin, NC..... 336-526-2619

PULMONARY/CRITICAL CARE

Hugh Chatham Health | Pulmonology..... 546 Winston Road, Jonesville, NC..... 336-527-7298

Pulmonary Rehab 180 Parkwood Drive, Elkin, NC 336-527-7523

SURGICAL SERVICES

Hugh Chatham Health | General Surgery

Elkin 101-A Eldon Parks Drive, Elkin, NC 336-835-2349

URGENT/EXPRESS CARE

Hugh Chatham Health | Urgent Care (Elkin)..... 631 CC Camp Road, Elkin, NC 336-366-1072

Hugh Chatham Health | Urgent Care (Jonesville) 546 Winston Road, Jonesville, NC..... 336-526-0037

Hugh Chatham Health | Family Medicine & Express Care (Clingman) 3369 Clingman Road, Ronda, NC..... 336-984-3003

Hugh Chatham Health | Family Medicine & Express Care (Dobson)..... 911 E. Atkins Street, Dobson, NC..... 336-374-1010

UROLOGY

Hugh Chatham Health | Urology..... 200 Johnson Ridge Medical Park, Elkin, NC 336-526-0040

WOUND CARE

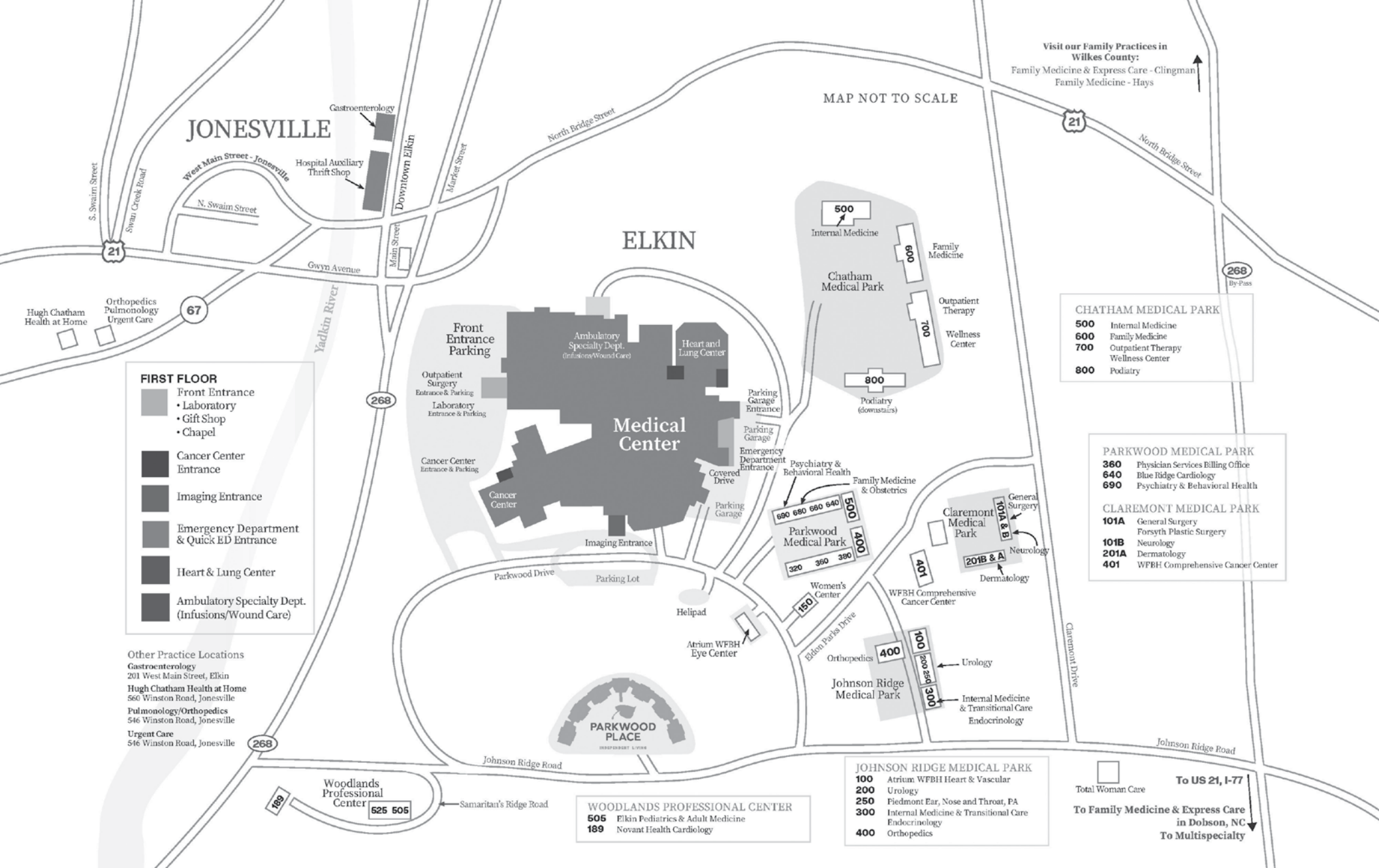
Hugh Chatham Health | Wound Care 180 Parkwood Drive, Elkin, NC 336-527-7184

FIND A PROVIDER

Visit www.hughchatham.org/find-a-provider to search by name or specialty.

MAKE AN APPOINTMENT

Visit www.hughchatham.org/appointments to select diagnosis or practice location.



24 SPECIALTIES. 900+ HEALTHCARE PROFESSIONALS.
350,000+ COMPASSIONATE MOMENTS CREATED ANNUALLY.



180 Parkwood Drive, Elkin, NC 28621

(336) 527-7000

www.hughchatham.org